

USB 2.0 4-Port Hub

User's Manual

Safety Instructions

Always read the safety instructions carefully:

- Keep this User's Manual for future reference.
- Keep this equipment away from humidity.
- If any of the following situation arises, get the equipment checked by a service technician:
 - The equipment has been exposed to moisture.
 - The equipment has been dropped and damaged.
 - The equipment has obvious sign of breakage.
 - The equipment has not been working well or you cannot get it work according to User's Manual.

Copyright Statement

No part of this publication may be reproduced in any form by any means without the prior written permission. Other trademarks or brand names mentioned herein are trademarks or registered trademarks of their respective companies.

Disclaimer

Information in this document is subject to change without notice. The manufacturer does not make any representations or warranties (implied or otherwise) regarding the accuracy and completeness of this document and shall in no event be liable for any loss of profit or any commercial damage, including but not limited to special, incidental, consequential, or other damage.

Table of Contents

- Introduction3**
- Features3**
- Package Contents.....3**
- System Requirement3**
- Notice4**
- Hardware Connection.....4**
- Installation Verification4**
- Over-Current Status.....6**
- Specifications.....6**

Introduction

This is a 4-port hub, compliant with USB 2.0 specification. It is able to support 12m transmission distance, and complies with USB-IF Battery charging specification 1.1. This Hub has an USB charging detection mechanism, each port supports Battery charger function, but only one can be the Battery charger port at the same time. Users can only choose one of four ports as the port for battery charging function at the same time. With this USB Hub you can easily connect up to 4 USB 2.0 devices to your computer, such as an MP3 player, digital camera, or printers. Its streamlined, sleek and compact design is the perfect solution for USB port expansion.

Features

- Fully compliant with USB2.0 specification (1.5/12/480 Mbps)
- Complies with USB-If Battery charging specification 1.1
- Either one of four USB ports can provide fast recharge (1.5A) function.
- USB charging detection mechanism
- Bus-power and self-power mode used
- 1 upstream and 4 downstream USB ports
- 1 blue LED as power-on indicator
- 12m transmission distance for Host to Hub
- Plug-and-play function
- A charging port is either a dedicated charging port or a charging downstream port
- An USB charger is a device with a dedicated charging port ,such as a wall adapter or car power adapter

Package Contents

- USB 2.0 4-port Hub
- USB AM to 5P mini BM cable (1m)
- Power Adapter
- User's Manual

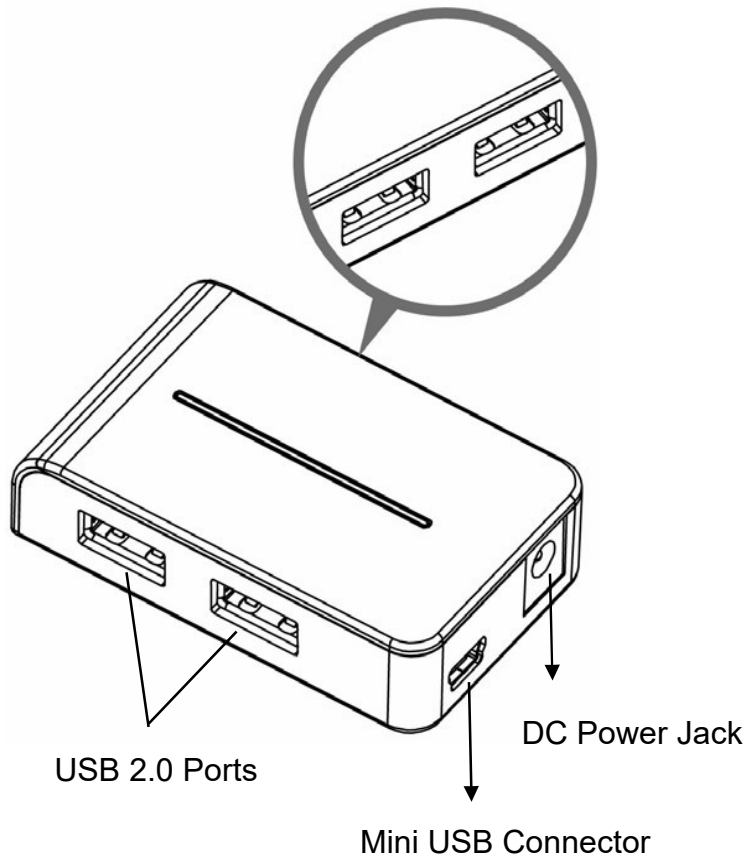
System Requirement

- Desktop PC or notebook with USB port
- One of the following operating systems (no driver needed):
Windows 2000, Windows XP, Windows Vista SP1 or SP2, Windows 7,
Mac OS X v10.x or later

Notice

□ When using high power consumption devices, the **Power Adapter** is recommended.

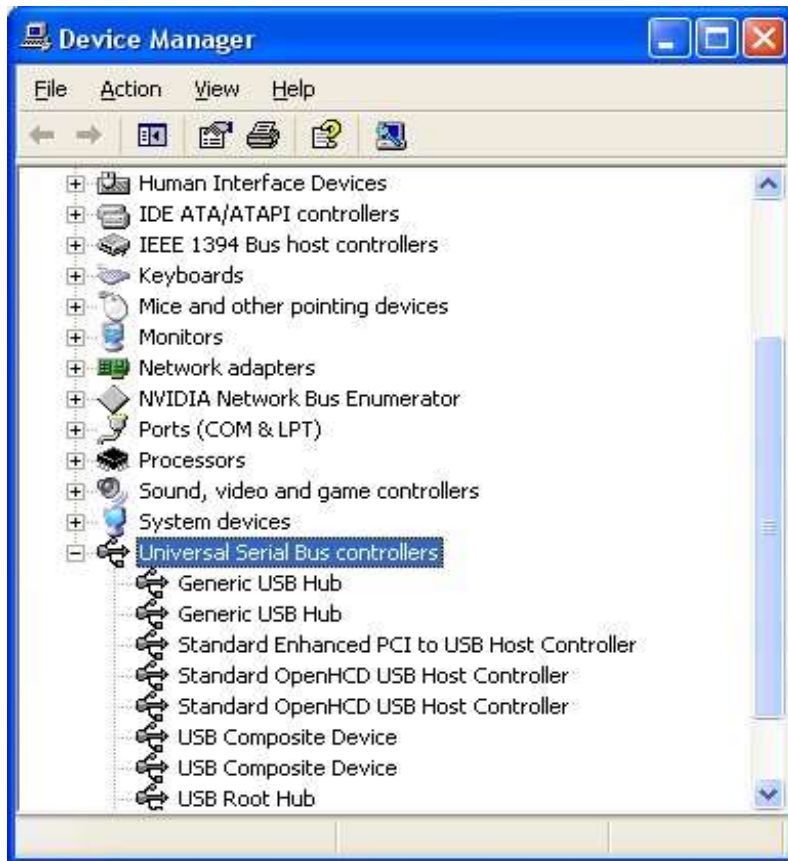
Hardware Connection



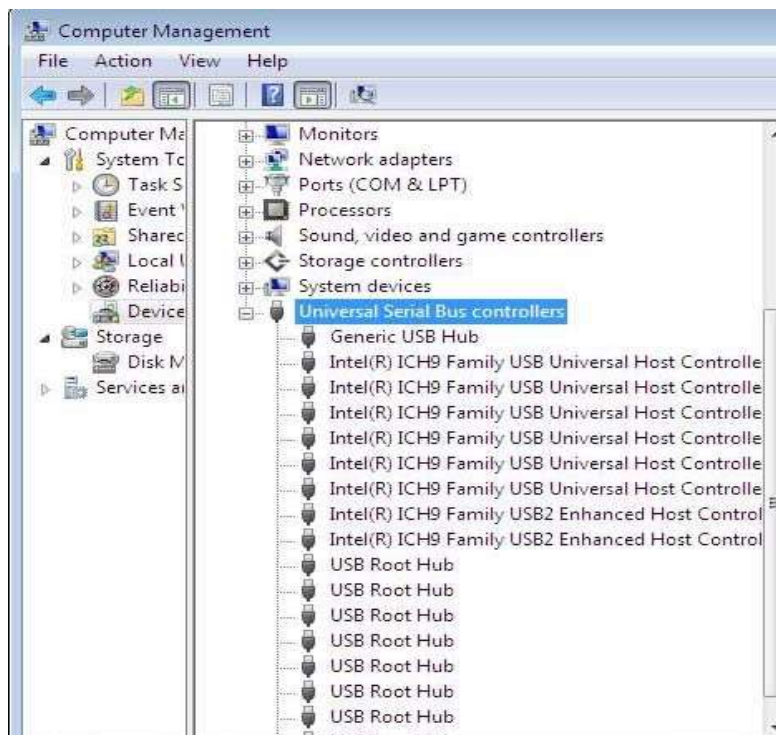
Installation Verification

After you connect this hub to a PC by an USB cable, the system will detect the device and install the required drivers automatically. After the installation is finished, you can go to **Device Manager** to verify the entire installation.

Windows 2000/ Windows XP:

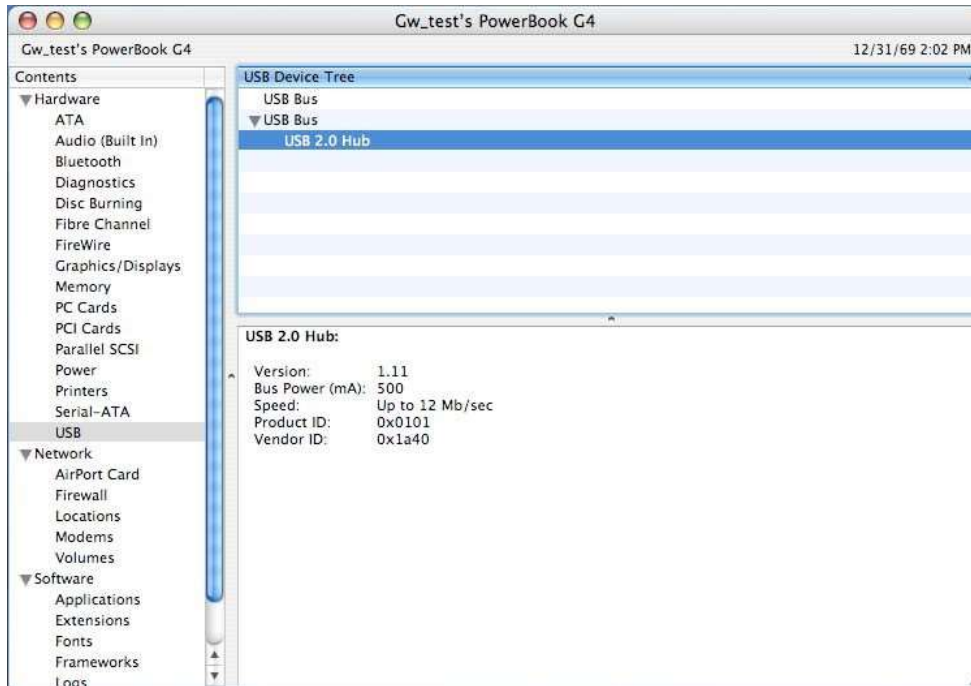


Windows Vista /Windows 7:



Under Windows: Go to **Device Manager** to verify the installation. Under the **Universal Serial Bus controller** group, an item **Generic USB Hub** should appear.

Mac OS:



Mac OS: Go to **Apple System Profile > Device and Volumes > USB** to verify the installation.

Over-Current Status

- If there is a pop-up window, "USB Hub Current Limit Exceeded", please click Reset to resume your work or you can reset the hub by unplugging the USB cable and plug it back.
- When there is over-current, the red LED will be turned off and the power will be disconnected, due to over-current protection.

Specifications

Ports	1 upstream port and 4 downstream ports	
Power	Bus-Power: 5V 500mA Self-Power: 5V 4A	
	Adapter	Input: 100~240v 50Hz-60Hz Output: 5V 4A
Dimensions	65.34 (L) * 40.08(W) * 18.03 (L) mm	