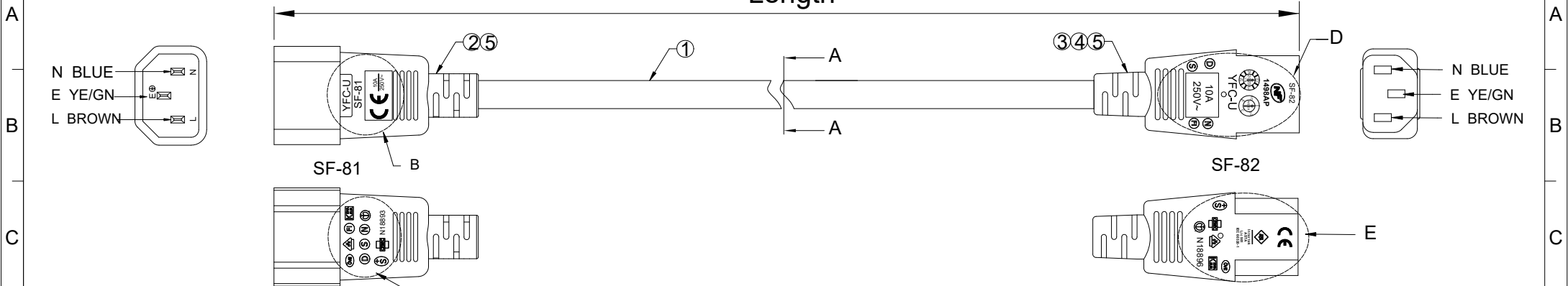
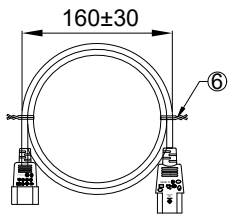
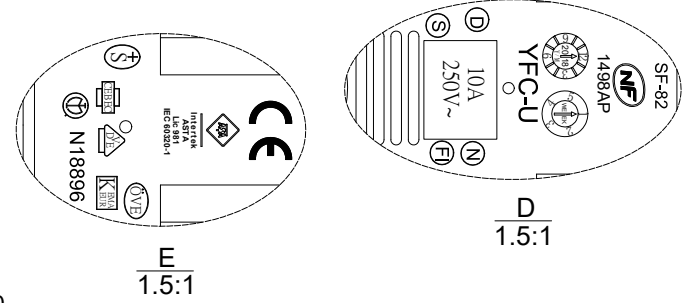
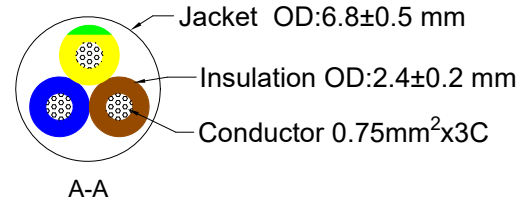
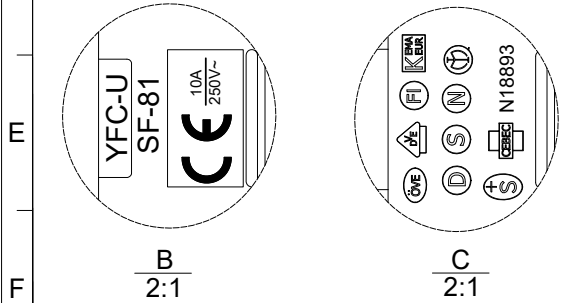


**MOLDING:**  
AAM084 (SF-81)  
AAM1303 (SF-82)

DATE	REV.	REVISION	DRAFTING	CHECKED
2023.01.02	A/0	Initial	LQF	2023.01.02 李正峰



**CABLE MARKING (NO.129) :**  
 +の+の+の KEMA-KEUR (OVE) (S) (N) (D) (FI) △CEBEC 972 <VDE>  
 NF-USE 1345 IEMMEQU H05VV-F 3G 0.75MM<sup>2</sup> V-75 300/500V  
 ORDINARY DUTY NSW17436 YFC BON-EAGLE



PINOUT			
SF-81		SF-82	WIRE
E		E	YE/GN
L		L	BROWN
N		N	BLUE

Polarity and Conduction and Puncture Test	
Dielectric Voltage Withstand Test : 2000V / 1 Sec	
Electrical Performance (20°C)	
Item	Parameter
Conductor Resistance	≤ 26.0Ω/1000m
Voltage Rating	AC 300/500V

Customer Item NO.	Cable Color	Molding Color	Length (MM)
19.08.1520	Red	Red	1800±30
19.08.1521	Yellow	Yellow	1800±30
19.08.1522	Blue	Blue	1800±30
19.08.1523	Green	Green	1800±30



⑥	Mini Tie	Mini Tie	2PCS
⑤	Molding	Molding 40P PVC	AR
④	Housing	SF-82 One piece of inner frame IEC C13 Three plug Black	1PC
③	Terminal	SF-82 IEC C13 Three plug Female Straight insert of Common terminal brassy yellow 0.75mm <sup>2</sup>	3PCS
②	Terminal	SF-81 One piece of inner frame IEC C14 Three plug Black Nickel plated 0.75mm <sup>2</sup>	1PC
①	Cable	H05VV-F 3G 0.75mm <sup>2</sup> x3C PVC	1PC

Unless specified on the drawing, tolerances are per the follows:		DRAW. NO	GFAC-S230001	TITLE	H05VV-F 3G 0.75mm <sup>2</sup> x3C SF-81 to SF-82 CABLE ASS'Y		
X.	±0.20	X°	±3	CUSTOMER	--	CUST' R P/N	--
.X	±0.10	.X°	±0.3	SCALE	1:1	DATE	2023.01.02
.XX	±0.05			UNIT	mm	CHECK	2023.01.02 李正峰

No.	TITLE	DESCRIPTION	Q'TY
Cable Spec NO.	GFDY-C200021	Part Number	--

APPROVED	SHEET	1 of 1
----------	-------	--------