

1

2

3

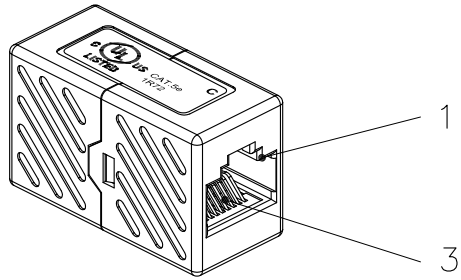
4

5

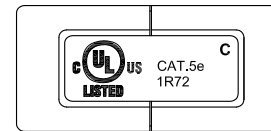
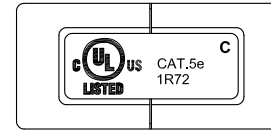
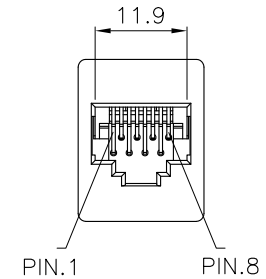
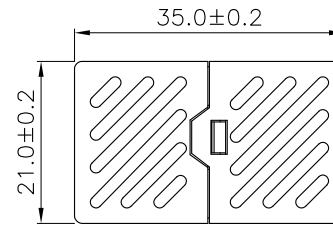
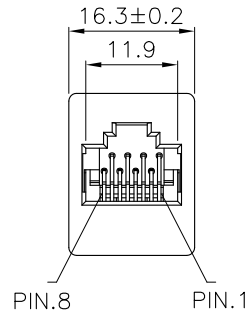
6

A

A



SCALE 1/1



B

B

C

C

Specification :

Material :

1. RJ45 Jack :
 - 1-1. Housing : ABS, UL 94V-0, with optional color.
 - 1-2. Contact Bracket : PC, UL 94V-2, Transparent color.
2. RJ45 Jack Contact :
 - 3-1. Material : Phosphor Bronze with Nickel plated.
 - 3-2. Finish : 50 micro-inch Gold plated on Plug contact area.
3. PCB : FR4, UL 94V-0.

Performance :

- a. Insertion force : 20N max. (IEC 60603-7-4).
- b. Retention strength : 7.7 kg between Jack and Plug.
- c. Operating temperature : -10°C to 60°C. (ISO/IEC 11801, ANSI/TIA/EIA 568 C.2)
- d. Life(mating cycles) : 750 cycles min. (ISO/IEC 11801, IEC 60603-7-4)
- e. The Cat.5e transmission performance is in compliance with the ANSI/TIA/EIA 568 C.2 standard.

D

D

GENERAL TOLERANCE OF DIMENSIONS X.XXX ±0.005 X.XX ±0.05 X.X ±0.1	DRAWING	08.AUG.2014	CHP	SECOMP
	CHECK	08.AUG.2014	DAY	
	APPROVAL	08.AUG.2014	JAIMY	
	DATE		NAME	
SCALE	1/1 (A4)	UNIT	mm	ITEM NO.: 21.17.3001
DRAWING NO. ROLINE Cat.5e Modular Coupler, unshielded		DRAWING CLASSIFICATION		SHEET 1 OF 1
		S		
				01

1

2

0

3

4

10cm

5

6