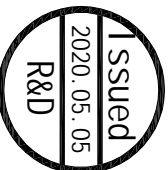
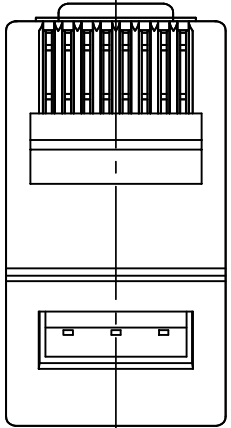
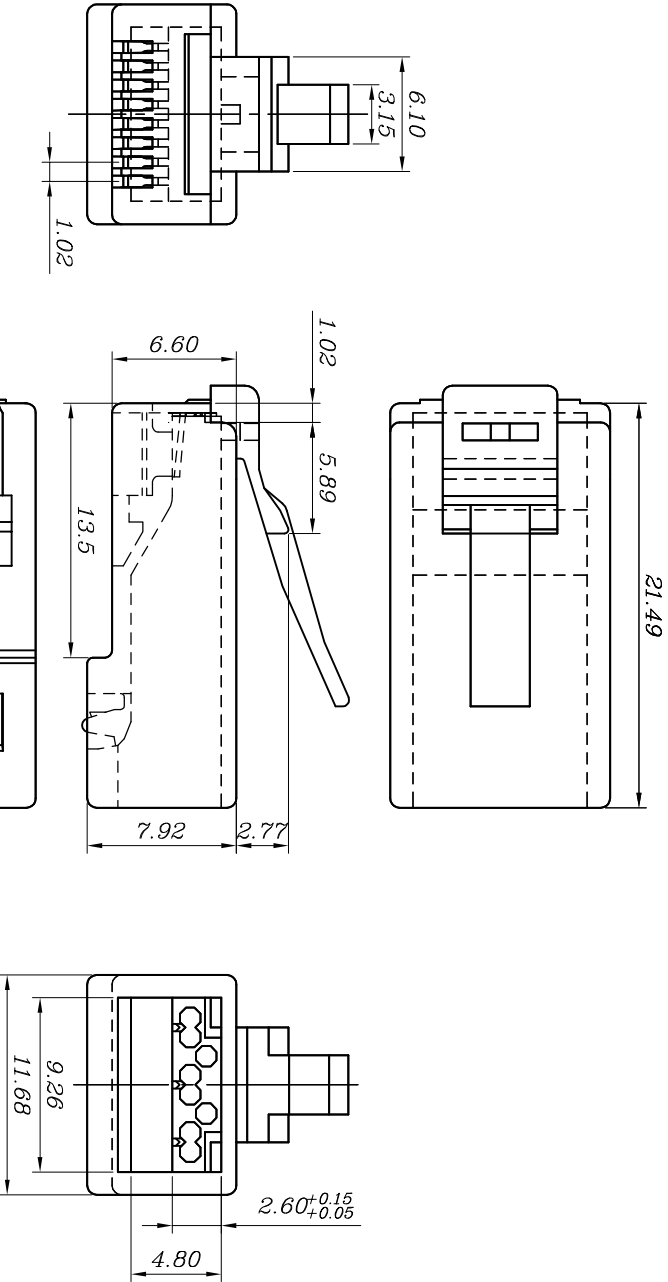


REV	DATE	MODIFICATION	DRAWN
	2015/09/21		

SPECIFICATIONS
 1. ELECTRICAL:
 UL APPLICATIONS: 250 VOLTS AC MAX. AT 2 AMPS.
 DIELECTRIC WITHSTANDING VOLTAGE : 1000 VOLTS AC. 60 SEC.
 INSULATION RESISTANCE: 500 MΩ.
 CONTACT RESISTANCE: 20mΩ MAX.
 OPERATING AMBIENT TEMPERATURE: -20°C - 75°C.

2. MECHANICAL:
 STRAIN RELIEF: 20 POUND MIN.
 DURABILITY: 1200 MATING CYCLES.
 3. MATERIAL:
 HOUSING: POLYCARBONATE, UL94V-0 OR UL94V-2.
 COLOR: TRANSPARENT OR OTHER COLOR ARE AVAILABLE.
 CONTACT BLADE: COPPER ALLOY.
 GOLD PLATING: 30"-500", ARE AVAILABLE.
 4. USAGE:
 SUITABLE FOR STRANDED & SOLID WIRE 23 AWG ~ 26 AWG.



BLADE:	EB	YB	Z	AE	AB	EC
Drawing						
Mark				✓		

GOLD PLATING	3Mu"	3u"	6u"	15u"	30u"	50u"	CABLE TYPE	ROUND	FLAT
Mark					✓		Mark	✓	

SECOMP

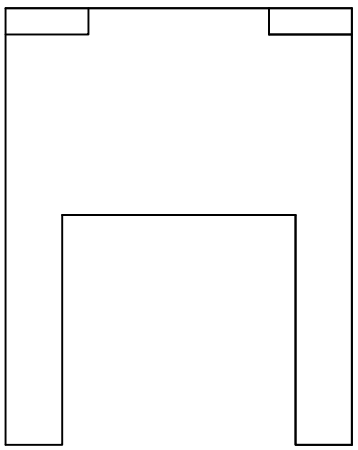
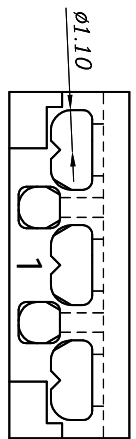
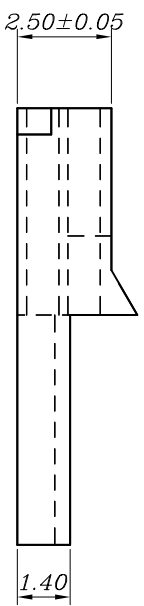
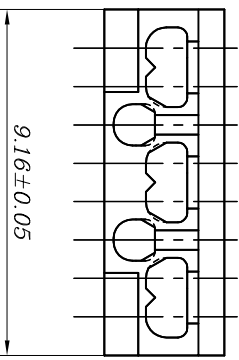
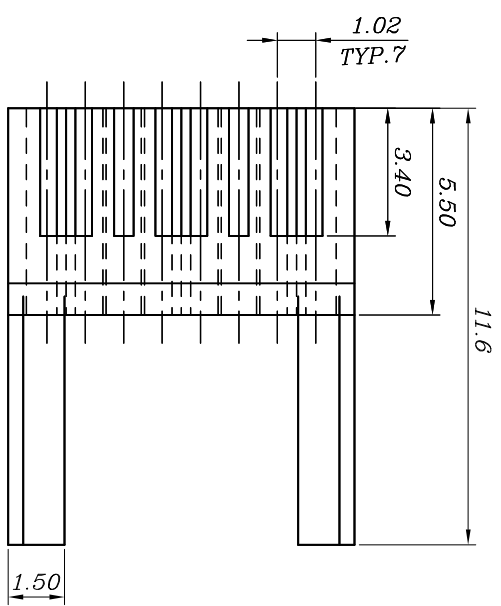
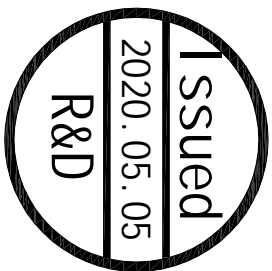
DIMENSION IN mm (Inch) TOLERANCE UNLESS OTHERWISE SPECIFIED		MATERIAL	DWG NO.
X±0.20	.XX±.5°	PC	PLUG-031(2.6)-0026
.XX±0.10	.XX±2°	TITLE	21.17.3062
APPROVAL	CHECKED	DRAWN	SCALE
		Cathylti	5/2
			SHEET
			1/1
			REV
			A

1 2 3 4 5 6 7

A B C D

1 2 3 4 5 6 7

ST-DR-009A



(It can be used for the wire OD from Ø 0.98~Ø1.05)

REV	DATE	MODIFICATION	DRAWN
C	2012/06/17		

SECCOMP

DIMENSION IN mm (Inch) TOLERANCE UNLESS OTHERWISE SPECIFIED		MATERIAL	DWG NO.	SCALE		SHEET
.X±0.20	.X°±5°	PC	PLUG INSERT-027A	5/1	1/1	
.XX±0.10	.XX°±2°	TITLE	21.17.3062	PROJ.	REV	C
APPROVAL	CHECKED	DRAWN				
Carine	Zach	Cathylia				