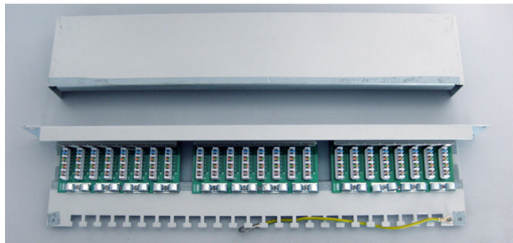


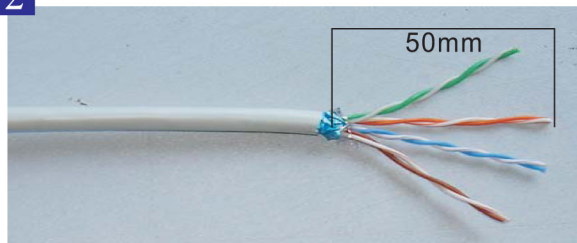
Full shielded patch panel installation instruction

1



Abdeckung demontieren
Open the cover.

2

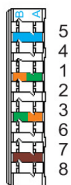


Kabelmantel abisolieren, Schirmung umschlagen und Adernpaare vorbereiten

Strip approximately 50mm from the cable jacket, fold back the foil or braid shield and prepare each pair.

3

IDC(KRONE)



T568A

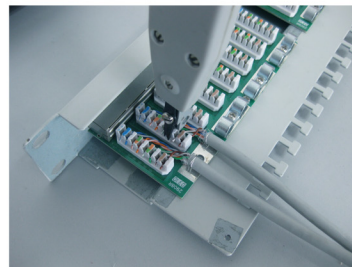
Pin 5	White/Blue
Pin 4	Blue
Pin 1	White/Green
Pin 2	Green
Pin 3	White/Orange
Pin 6	Orange
Pin 7	White/Brown
Pin 8	Brown

T568B

Pin 5	White/Blue
Pin 4	Blue
Pin 1	White/Orange
Pin 2	Orange
Pin 3	White/Green
Pin 6	Green
Pin 7	White/Brown
Pin 8	Brown

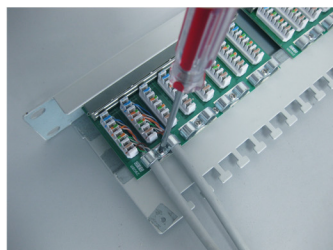
Farbcode wählen und Adernpaare in die LSA-Kontakte legen
Follow the direction on the color-coding sticker for T568A or T568B wiring and set pairs into proper position.

4



LSA-Kontakte mit Einlegewerkzeug auflegen
Punch down wires with LSA-tool.

5



Kabelschirm unter die Klemmen legen und handfest anziehen
Fasten the screws through metal case to hold tightly down for two cable jackets in the same time.

6



Cable tie
Kabelbinder

Installierte Kabel mit Kabelbindern zugentlasten
Fasten cable ties for additional strain relief.