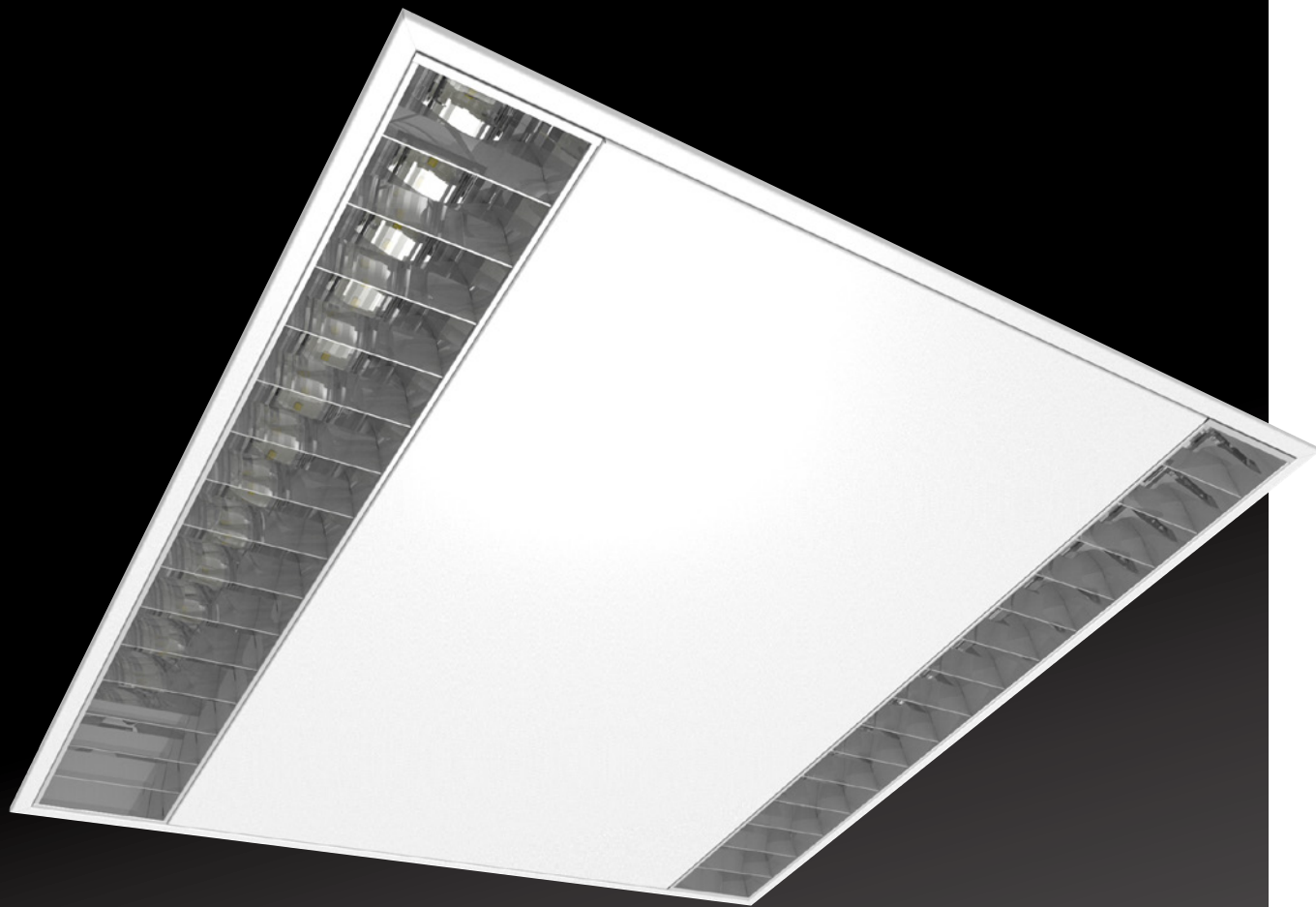


*"Classic on the outside, modern on the inside"*

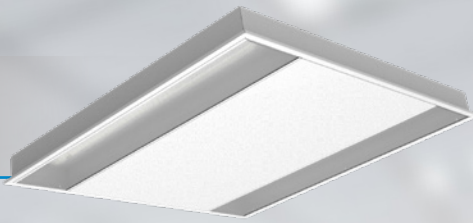
# DEMA



**GRAH**<sup>®</sup>  
LED LIGHTING

OFFICE

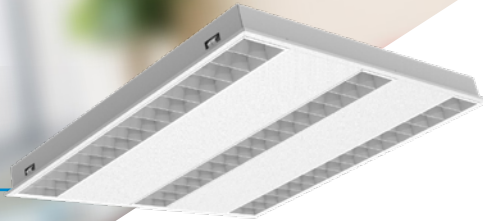
## DEMA MPR PLUS



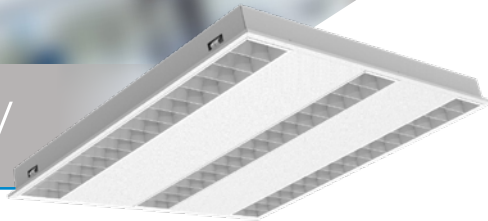
## DEMA II



## DEMA III



## DEMA DW



## TECHNICAL SPECIFICATIONS

		DEMA MPR PLUS	DEMA II	DEMA III	DEMA DW
Supply voltage range:	198-264 V, 50 / 60 Hz				
Consumption:	32 W / 51 W	32 W / 46 W	36 W / 51 W	32 W / 49 W	43 W
Power Factor:	>0,95				
Temperature range:	-5 °C / +40 °C				
Working temperature at Ta25:	+55 °C				
Light guiding system:	Hybrid optics (Alu-mirror - PMMA lenses) PMMA Diffusing microprismatic	•	•	•	•
Optics:	/				
Power reduction:	ON/OFF, DALI, DALI dynamic white	•	•	•	•
Emergency module (optional):	1h, 3h				
Light source:	Mid power LED				
Colour temperature:	3000 K, 4000 K, 5000 K				variable
System efficacy:	Up to (lm/W):	134	119	125	variable
UGR:	<19				
LED Lifetime:	Up to 50.000 hours, L80 @ Ta = 25 °C				
Colour Rendering Index:	CRI >80				
Luminous flux:		4.300 / 5.500 lm	4.300 / 5.800 lm	4.000 / 6.000 lm	4.300 - 4600 lm
Appliance class:	I				
Housing material:	Steel				
Cover material:		•	/	/	/
Housing colour:	White (other colours on request)				
Ingress protection class:		IP40	IP20	IP20	IP20
Mounting options:	Recessed				
Suggested mounting height:	Up to 5 m				
Dimension (L x H x W):	597 x 597 x 50 mm 622 x 622 x 50 mm (other dimensions on request)				
Net weight:		5,6 kg	5,4 kg	5,5 kg	5,5 kg

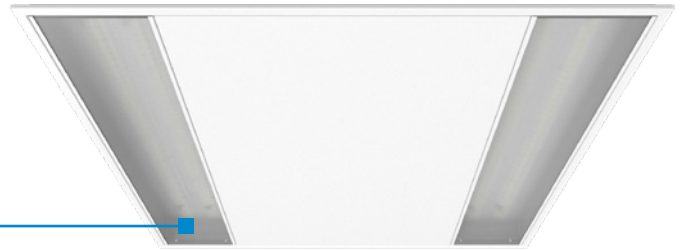
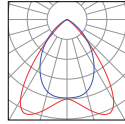


# FEATURES

Low UGR with efficacy up to 134 lm/W make DEMA MPR PLUS an excellent recessed office light.

Microprismatic optics have an attractive appearance, and contribute to softer luminance transitions between different surfaces in a room. Luminaires with microprismatic diffusers from Grah offer high efficacy and an excellent low glare light output, thanks to the quality of the prismatic structure of this material.

DEMA MPR PLUS



Special superior quality microprismatic cover, for a luminaire with "perfect" light distribution.

The high quality transparent acrylic optics has a transmittance of 92%. It is made from a numerous prisms, carefully calculated to direct the light at exactly the right angles needed to avoid unwanted glare.

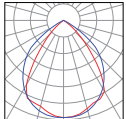


Comfort optics and low UGR make DEMA II & DEMA III a high demand office light with up to 6000 Luminous flux

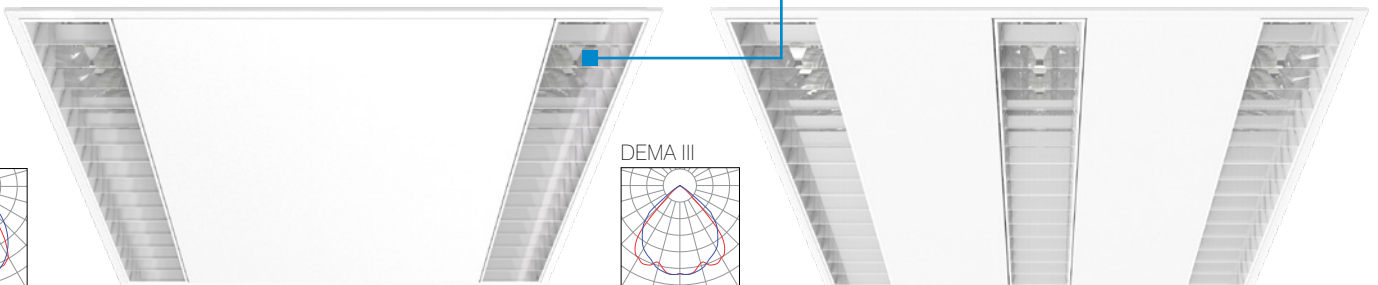
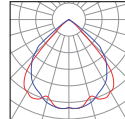
With hybrid optics the source is surrounded by lenses and reflectors that capture the omnidirectional light, guide it into the specified distribution, and contribute to comfort luminance transitions between different surfaces in a room.



DEMA II



DEMA III



Louver luminaires are ideal for general lighting of office space while maintaining a high degree of anti-glare protection.

# A "classic" re-invented DEMA DW with Dynamic White option for a true human centric luminaire!

"Human centric lighting is intended to promote a person's well-being, mood and health. It can improve concentration, safety and efficacy in workplaces or educational environments."  
LightingEurope

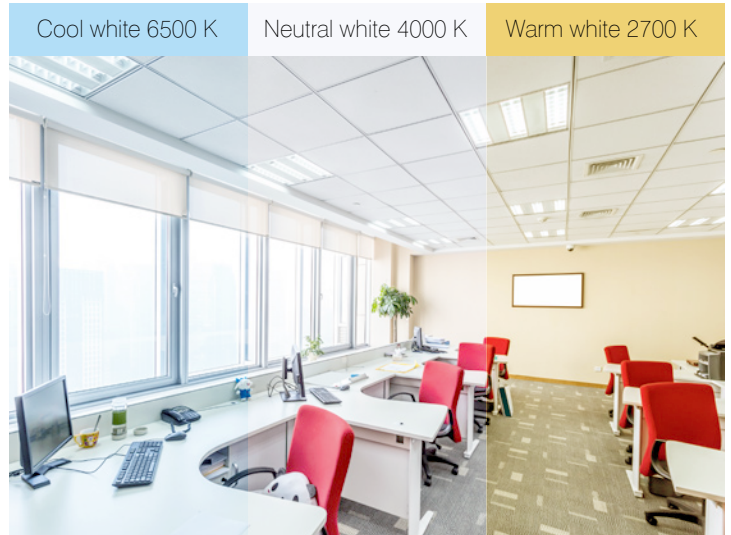
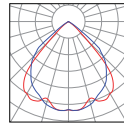
Dynamic White LED lighting systems, allow full dynamic control, changing colour temperature from cool to warm:

- colour temperature range: 2700 – 6500K
- DIM on the specified colour temperature
- dynamic White systems are controlled with simple touch wheel remote controls or with more sophisticated network enabled DALI devices (on request)

Why choose Dynamic White lighting:

- for creative impact
- time based effects
- to enhance well-being by following a natural circadian rhythm.

DEMA DW



## COMMERCIAL SPECIFICATIONS

ID: 2 3 2 3 - 0 0 4 3 - 1 3 4 3 - 1 0 2 1

Code	Name	Code	Regulation	Code	Optics / Lum. flux [lm]		Power [W]	Code	Colour Temp.[K]	Code	Size [mm]
					34 MPR	35 DP					
2323	DEMA MPR PLUS	0	ON/OFF	043	4300	-	32	3	3000*	1	597 x 597
		3	DALI	055	5500	-	46				
2333	DEMA II	5	ON/OFF + EM 1h	043	-	4300	36	4	4000	2	622 x 622
		6	ON/OFF + EM 3h	058	-	5800	51				
		7	DALI + EM 1h	040	-	4000	32				
2343	DEMA III	8	DALI + EM 3h	060	-	6000	49	5	5000*		
2353	DEMA DW	3	DALI					0	variable	1	597 x 597
		7	DALI + EM 1h	044	-	4400**	43				
		8	DALI + EM 3h								

\*Luminous flux for 3000 K and 5000 K may vary, please contact our Sales department for detailed information.

\*\*At 4000 K.



GRAH LIGHTING d.o.o.  
Zadružna ulica 6,  
SI-2310 Slovenska Bistrica,  
Slovenia, EU

+386 82 801 424  
info@grahlighting.com  
[www.grahlighting.com](http://www.grahlighting.com)